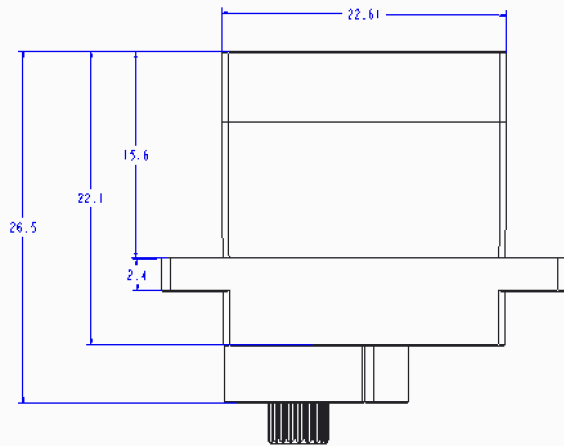
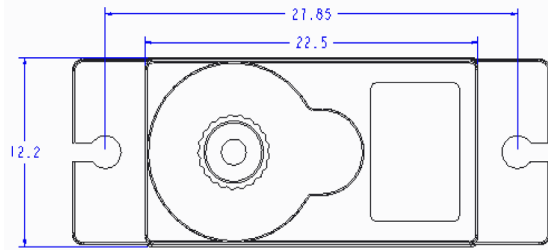


# 产品规格书

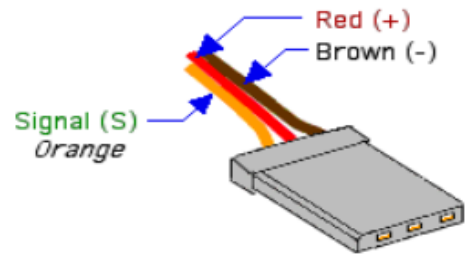
## Products Specification

Products Name:SG90 9G SERVO		Products No.	
1.使用条件 Apply Environmental Conditon			
No.	Item	Specifcation	
1.1	储存温度 Storage Temperature Range	-30°C ~ 80°C	
1.2	运行温度 Operating Temperature Range	-25°C ~ 70°C	
2.测试环境 Standard Test Environment			
No.	Item	Specifcation	
2.1	温度 Temperature Range	-25°C ~ 70°C	
2.2	湿度 Humidity Range	65%±10%	
3.机械特性 Mechanical Specification			
No.	Item	Specifcation	
3.1	舵机尺寸 Size	22.4*12.5*23.8mm	
3.2	重量 Weight	10g±5%	
3.3	齿轮类型 Gear type	5 Plastic,	
3.4	机构极限角度 Limit angle	360°	
3.5	轴承 Bearing	NO	
3.6	出力轴 Horn gear spline	20T 直径:4.9mm	
3.7	摆臂 Horn type	Plastic, POM	
3.8	外壳 Case	Engineering plastics(PBT)	
3.9	舵机线 Connector wire	250mm±5mm	
3.10	马达 Motor	Carbon brush motor	
3.11	防水性能 Splash water resistance	No	
4.电气特性 Electrical Specification			
No.	工作电压 Operat voltage	4.8V	
4.1	静态电流 Idle current	mA	
4.2	空载转速 No load speed	0.09sec/60°	
4.3	空载电流 Runnig current	90mA	
4.4	堵转扭矩 Peak stall torque	1.3kg.cm	
4.5	堵转电流 Stall current	750mA±10%	
5.控制特性 Control Specification			
No.	Item	Specifcation	
5.1	控制信号 Command signal	Pulse width modification	
5.2	放大器类型 Amplifier type	Digital controller	
5.3	脉冲宽度范围 Pulse width range	500 ~ 1500usec	
5.4	中点位置 Neutral position	1500usec	
5.5	旋转角度 Running degree	180°±3°(when 500 ~ 2500usec)	
5.6	死区宽度 Dead band width	5 usec	
5.7	旋转方向 Rotating direction	Counterclockwise (when 1000 ~ 2000usec)	

## 6.外观尺寸The Drawings:



## 导线颜色及定义The Wire and plug:

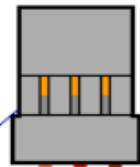


"F" Connector



Signal (S)  
Red (+)  
Brown (-)

"M" Connector



Signal (S)  
Red (+)  
Brown (-)

Lift tabs with knife edge  
to release wire pin